

NEWSLETTER



Rupeeseed Technology Ventures Pvt Ltd

VOL. 39 MARCH, 2026



Updates & Insights

By Sandeep Manoharan, CEO

At Rupeeseed, as we proudly mark 14 years of empowering India's capital markets, our commitment to building secure, scalable, and future-ready technology has never been stronger.

This month, we hit a significant milestones, RTV now powers 35% of the market's Margin Trading Reporting (MTR), reflecting the depth of trust our partners place in our infrastructure. We've also rolled out meaningful product enhancements to elevate the trader experience, including Customizable Watch List Columns in Web Login, giving users greater flexibility in how they navigate and act on market data. Alongside this, key advancements in our Admin Module, Partner Portal CRM, and security frameworks continue to reinforce our governance standards.

Every step we take is guided by our belief that great technology should be reliable, intuitive, and built for the long run. As we look ahead, we remain deeply grateful for your continued trust and partnership. Together, we are shaping smarter, more resilient capital markets ecosystems with a proven end-to-end capital markets product suite.

NEWSLETTER HIGHLIGHTS

▶ Trading

Customizable Watch List
Columns in Web Application

▶ Onboarding

Partner Portal CRM Enhancements

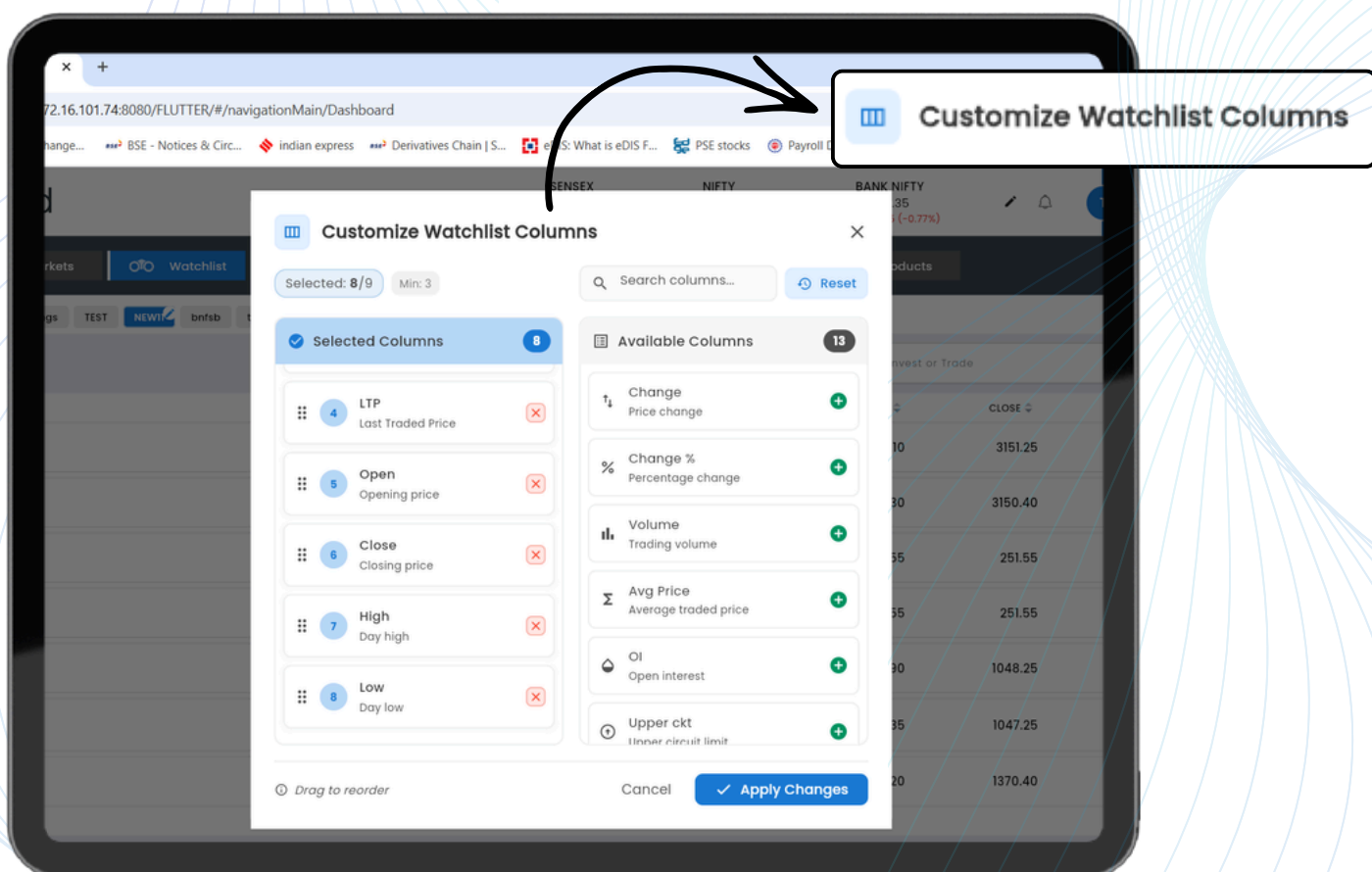
- Interactive Dashboard
- Downloadable Reports
- Client Centric Insights
- Custom Configuration

▶ Back-Office

RTV reaches the 35% mark in Margin Trading Reporting (MTR).

CUSTOMIZABLE WATCH LIST COLUMNS IN WEB APPLICATION

We are pleased to introduce a new enhancement to the web application experience, allowing users to personalize their Watch List by selecting from predefined column profiles. This change is to enhance personalization, flexibility and efficiency.



This feature enables users to choose column sets tailored to their needs, arrange and reorder columns based on their workflow preferences, and create a more efficient, user-friendly interface where the most relevant information is always easily accessible. Overall, this improvement provides greater flexibility and control, making the Watch List more intuitive and aligned with individual working styles.

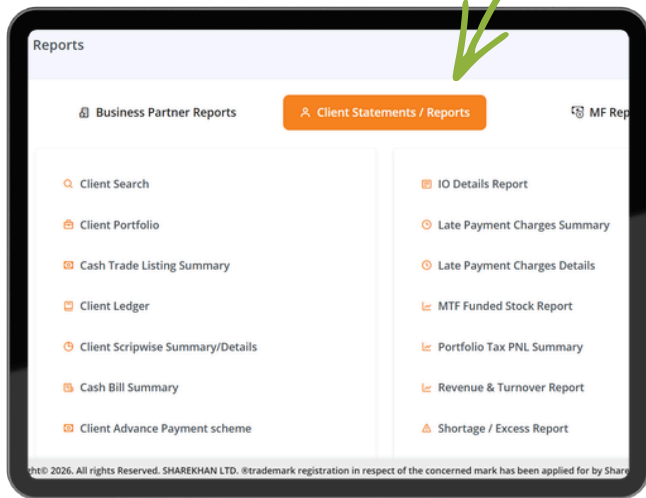
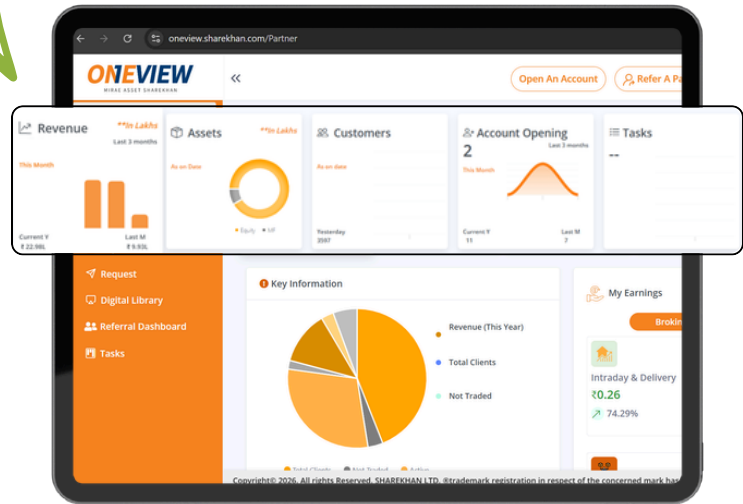
Product Level Enhancements

Onboarding

WHAT'S NEW IN CRM?

INTERACTIVE DASHBOARD

We have provided an interactive dashboard for partners to monitor their business performance. Through this dashboard, they can view metrics such as revenue, assets, customers, and other key insights. To name a few, the dashboard offers a "My Earnings" section with a product-wise breakdown, allowing partners to monitor earnings across different time periods and view trading activity by trade date.



ADVANCED REPORT DOWNLOAD

We have provided partners with the ability to view and download reports across multiple categories through the 'Report Download' option. This includes client-wise statement summaries, transaction and portfolio reports, holding reports, revenue and turnover reports, as well as other detailed reports.

KEY FEATURES



Interactive Dashboard

Track revenue, assets, and performance from one place.



Downloadable Reports

Access detailed performance reports.



Client Centric Insights

Access client-wise statement summary .



Custom Configuration

Tailor watchlists and reports to your needs.

Product Level Enhancements

Back Office



STRONG MARKET PRESENCE

RTV has strengthened its position in the capital markets technology space, with nearly 35% of total MTR processing in the market currently handled through its systems. This milestone reflects growing trust from brokers and financial institutions in RTV’s reporting and back-office capabilities.

SCALABLE & COMPLIANT SOLUTIONS

The rising adoption of RTV solutions highlights its ability to manage high volumes of regulatory reporting with accuracy, compliance, and operational reliability. As reporting requirements evolve, RTV continues to deliver stable, scalable, and technology-driven support to market participants.



TRUSTED INDUSTRY PARTNER

This achievement reinforces RTV’s deep expertise in brokerage back-office systems and its commitment to continuous platform enhancement. By enabling dependable reporting and operational efficiency, RTV remains a key technology partner contributing to stronger market infrastructure.



Stay tuned for more updates ahead!!

