

NEWSLETTER



Rupeeseed Technology Ventures Pvt Ltd

VOL. 38 FEBRUARY, 2026



Updates & Insights

By Sandeep Manoharan, CEO

At Rupeeseed, we continue to focus on strengthening brokerage operations through secure, scalable, and future-ready technology. Over the past month, we have introduced a series of product-level enhancements designed to improve performance, governance, and operational efficiency across our platform.

We were also pleased to participate in StockTech26 hosted by ANMI in Mumbai, engaging with industry leaders on scalable, technology-driven innovation shaping India's capital markets.

Key advancements include the integration of the Simultaneous Allocation API and Real-Time Detailed Allocation Reports, enabling greater execution precision and transparency. We have also launched the new Admin Module and enhanced the Partner Portal CRM to reinforce governance standards and streamline partner workflows. The MTF Pay-In Module has successfully gone live at Angel One, and the rollout of 2FA is underway to further strengthen system security.

Thank you for your continued trust and partnership as we build smarter, more resilient capital markets ecosystems together.

www.rupeeseed.com

NEWSLETTER HIGHLIGHTS

▶▶ Rupeeseed at ANMI

▶▶ Trading

Product-Level Enhancement

- Simultaneous Allocation API Integration
- Real-Time Detailed Allocation Reports

▶▶ Onboarding

Product-Level Enhancement

- Launch of the new admin module
- Partner Portal CRM Enhancements

▶▶ Back-Office

Product-Level Enhancement

- Go-Live: MTF Pay-In Module at Angel One
- Upcoming Security Enhancement: 2FA

Event Participation

ANMI, MUMBAI

RUPEESEED AT THE STOCKTECH EVENT BY ANMI 21ST FEBRUARY 2026

We were pleased to attend StockTech26, hosted by ANMI. The event brought together leading firms, market experts, and innovators to discuss the future of technology in India's financial markets. It served as an excellent platform to share insights, foster new collaborations, and support the continued evolution of the capital markets ecosystem.

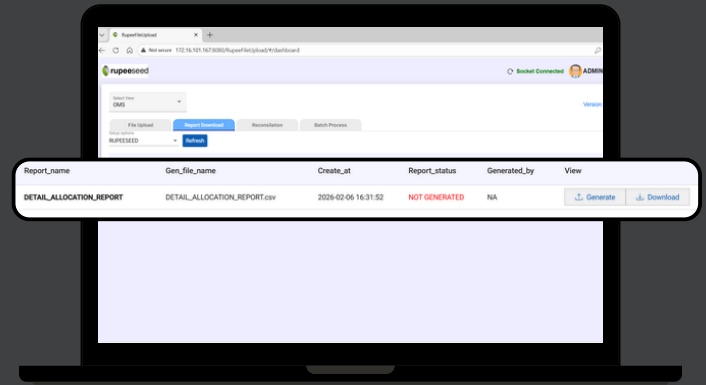
Product-Level Enhancements

Trading



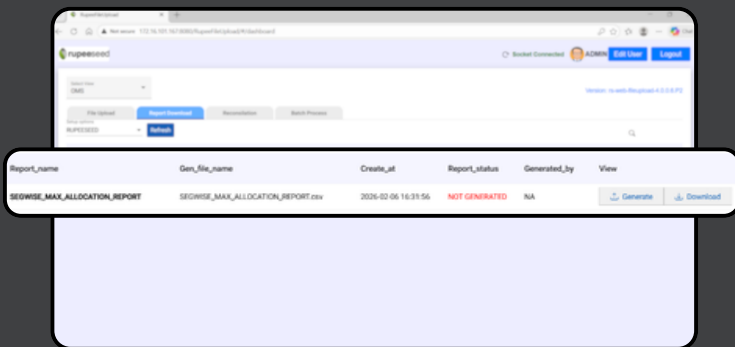
INTEGRATION OF CDSL INQUIRY API FOR MARGIN PLEDGE VERIFICATION

We have integrated CDSL’s Inquiry API to help members verify the real-time status of margin pledge requests at the depository level to ensure timely margin benefits for clients.



REAL-TIME DETAILED ALLOCATION REPORTS

Clients now have access to real-time allocation reports, organized client-wise and segment-wise. This feature provides complete transparency, enabling stakeholders to monitor allocation activity with precision and make informed decisions instantly.



REAL-TIME MAXIMUM ALLOCATION REPORTS

We’ve also launched real-time maximum allocation reporting, available client-wise and segment-wise. This ensures that allocation limits are continuously tracked, supporting compliance, risk management, and optimized resource utilization.

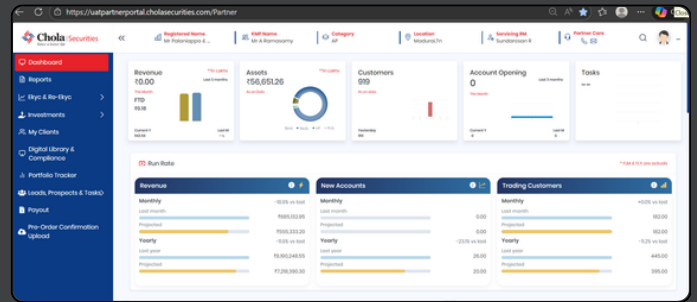
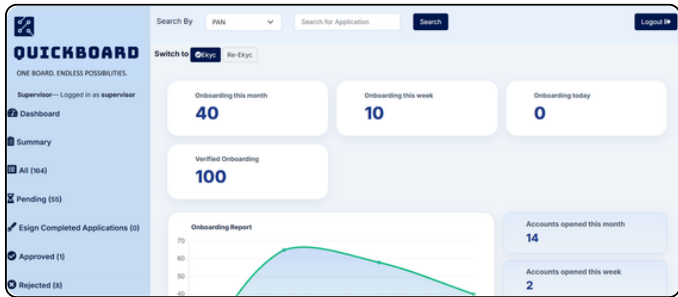


THE NSDL API FOR EDIS REVOCATION AND CANCELLATION.

We are pleased to announce the successful integration of the NSDL API for EDIS revocation and cancellation. This enhancement ensures streamlined handling of both processes, improving operational efficiency.

Product Level Enhancements - e-KYC

Onboarding



LAUNCH OF THE NEW ADMIN MODULE

The newly deployed Admin Module introduces a modernized framework that strengthens governance and operational control, featuring a secure login architecture and comprehensive audit logs for better tracking.

These enhancements improve security, efficiency, productivity, and decision-making.

PARTNER PORTAL CRM ENHANCEMENTS

Multiple high-impact CRM features have been launched to improve partner visibility and workflow efficiency, including a GST Dashboard for easy tax detail access and Account Opening Generation Links for instant workflow initiation.

KEY IMPACT METRICS



Secure Login



Audit Logs



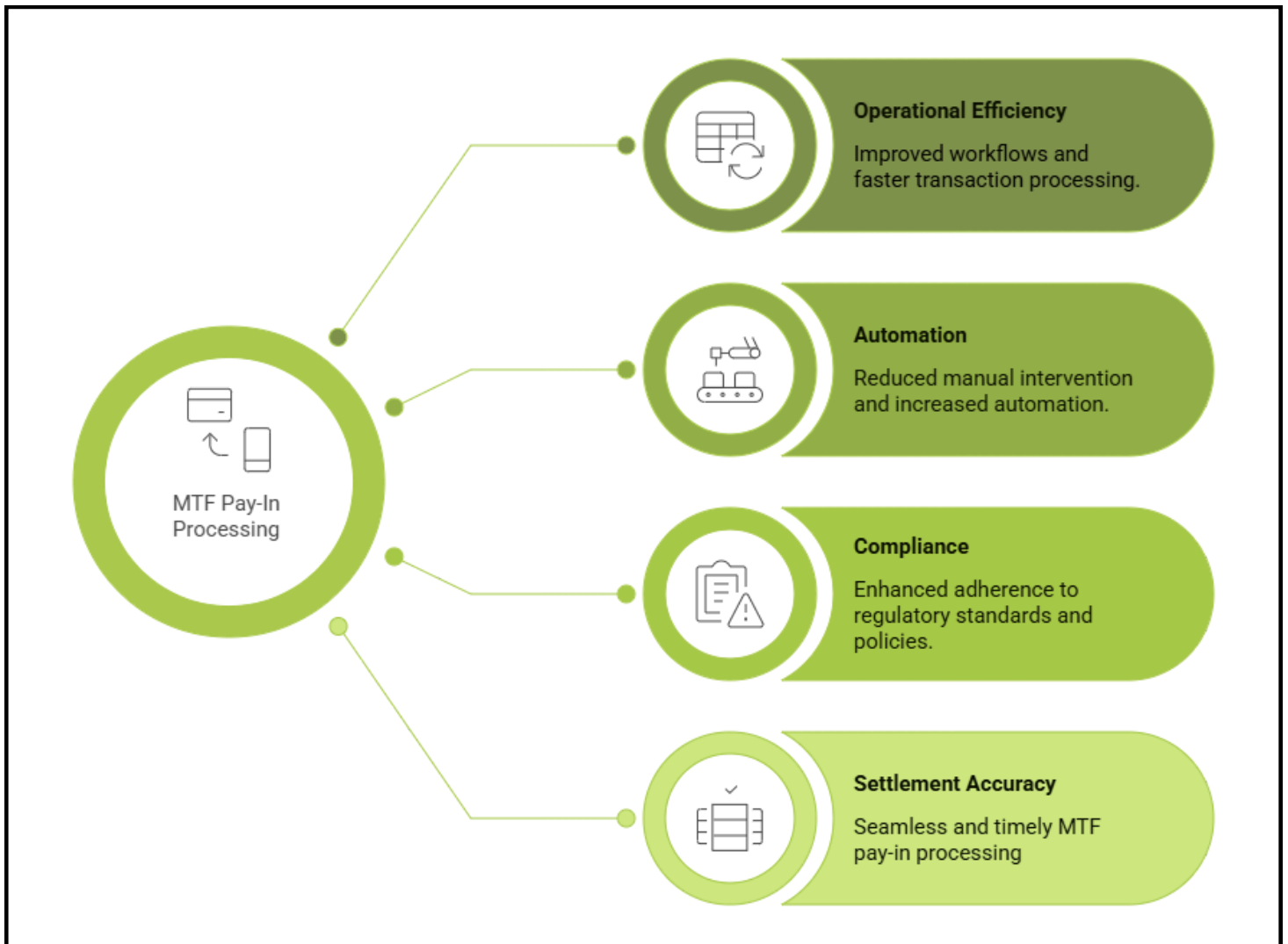
GST Dashboard



Instant Workflow

SUCCESSFUL LAUNCH OF THE MTF PAY-IN MODULE AT ANGEL ONE

We are pleased to share that we have successfully deployed the MTF Pay-In module in the live environment at Angel One. The deployment marks an important milestone in strengthening Margin Trading Facility (MTF) operations, enabling:



The go-live was completed smoothly with close collaboration between both teams, reaffirming RTV's commitment to delivering robust, scalable, and production-ready solutions for leading capital market institutions.

We look forward to continuing our partnership and supporting further enhancements in Angel One's trading ecosystem.

Product-Level Enhancements**Back Office****TWO-FACTOR AUTHENTICATION (2FA)****STRENGTHENING PLATFORM SECURITY**

As part of our continued focus on strengthening platform security and aligning with evolving regulatory best practices, RTV is currently in the process of introducing Two-Factor Authentication (2FA) across our system.

The 2FA framework will add layer of verification beyond standard login credentials, helping to reduce the risk of unauthorized access significantly. This enhancement is designed to improve overall system resilience while ensuring secure access for users across critical operational workflows.

REINFORCING TRUST & COMPLIANCE COMMITMENT

By implementing 2FA, RTV aims to further safeguard user access, protect sensitive information, and reinforce trust in the platform's security architecture. This initiative reflects our ongoing commitment to delivering secure, reliable, and compliance-ready technology solutions for the capital markets ecosystem.

Stay tuned for more updates ahead!!

